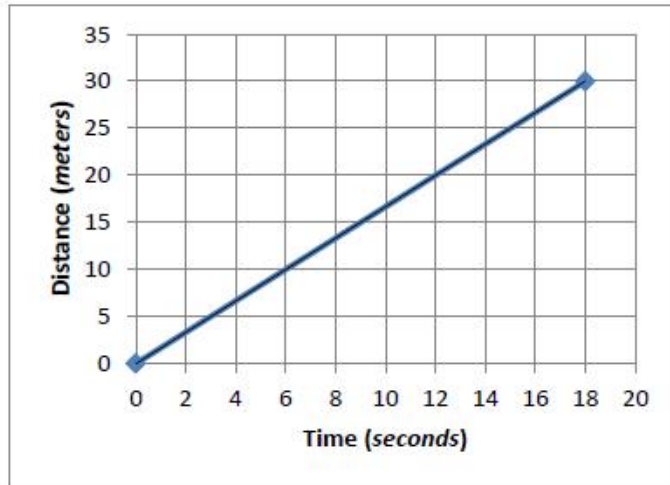


- Below are representations of three different boat speeds. Identify which boat is the fastest and explain how you know.

**Boat #1**

The **graph** below represents the distance over time collected for the 1<sup>st</sup> boat.



**Boat #2**

The **table** below represents the distances and times collected for the 2<sup>nd</sup> boat.

$x$	Time (seconds)	0	24
$y$	Distance (meters)	0	30



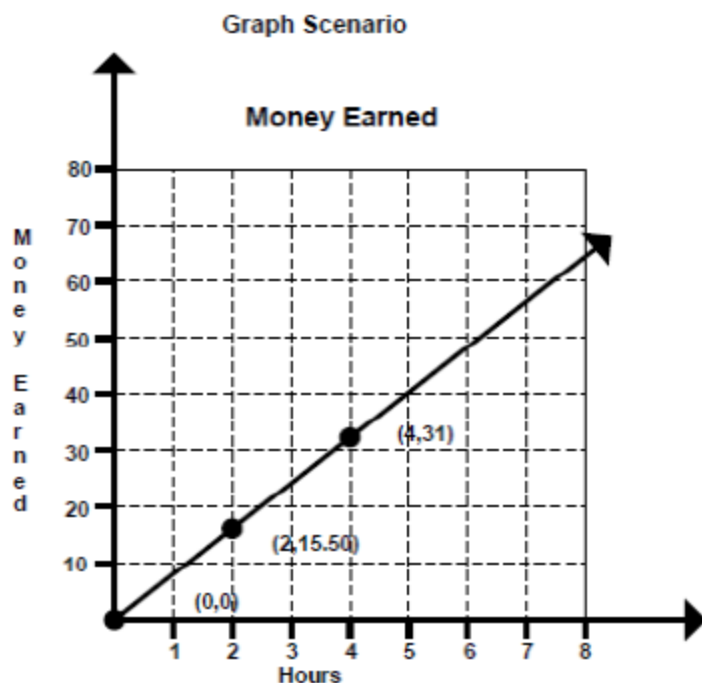
**Boat #3**

The **equation** below represents the function of distance and time for the 3<sup>rd</sup> boat.

$$y = \frac{3}{2}x$$



- Compare the representations below and identify which has the greatest hourly income and explain how you know.



**Algebraic Scenario**

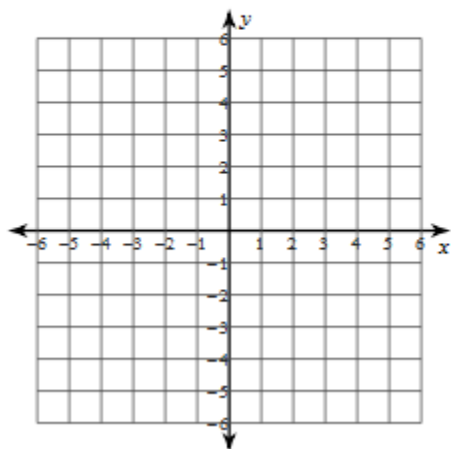
$$y = 7.5x$$

$x$  is time in hours

$y$  is money in dollars

**Sketch the graph of each line.**

3)  $y = \frac{7}{5}x + 3$



4)  $y = -x + 3$

