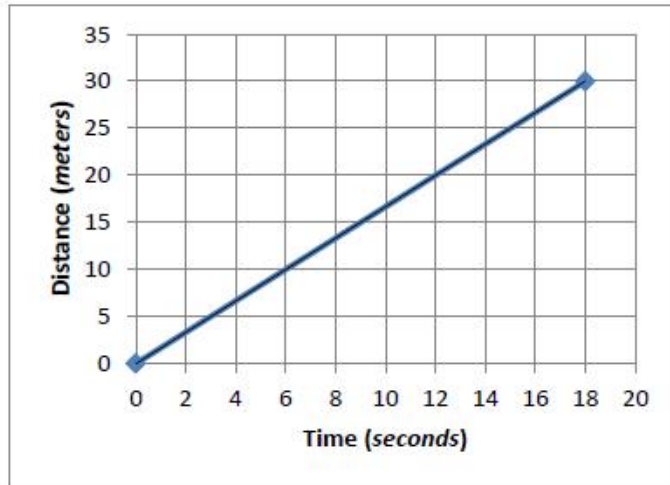


- Below are representations of three different boat speeds. Identify which boat is the fastest and explain how you know.

Boat #1

The **graph** below represents the distance over time collected for the 1st boat.



Boat #2

The **table** below represents the distances and times collected for the 2nd boat.

x	Time (seconds)	0	24
y	Distance (meters)	0	30



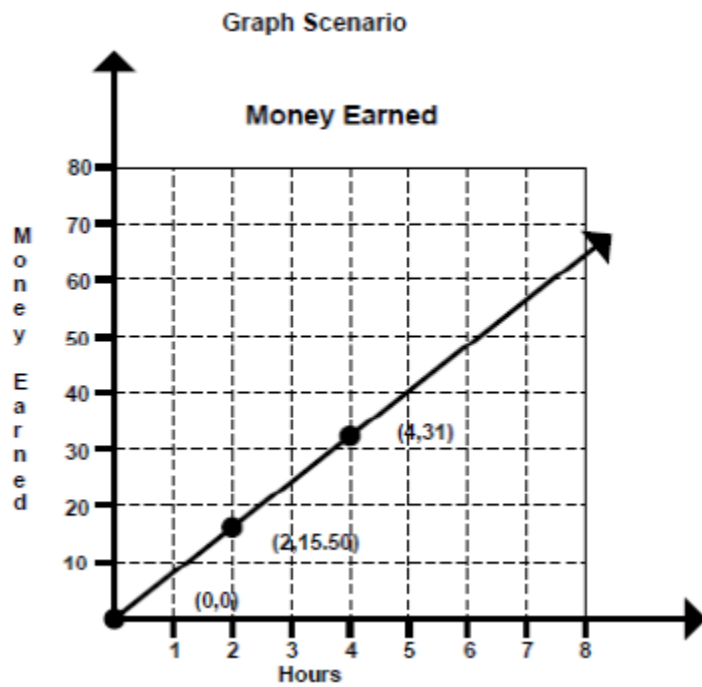
Boat #3

The **equation** below represents the function of distance and time for the 3rd boat.

$$y = \frac{3}{2}x$$



2. Compare the representations below and identify which has the greatest hourly income and explain how you know.



Algebraic Scenario

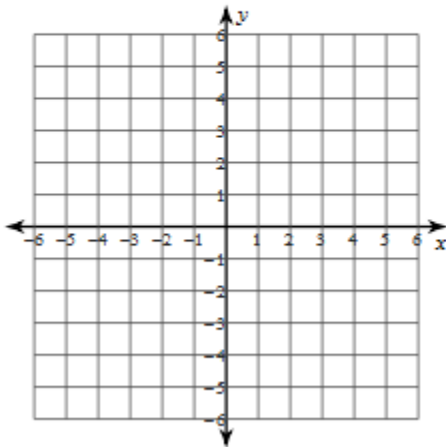
$$y = 7.5x$$

x is time in hours

y is money in dollars

Sketch the graph of each line.

3) $y = \frac{7}{5}x + 3$



4) $y = -x + 3$

